

**2004-2005 Prius
Navigation Enhancement Kit
With Bluetooth Support**

Thank you for your purchase of the Coastal Electronic Technologies, Inc. Navigation Enhancement Kit with Bluetooth Support. Once installed, the unit will automatically advance past the "I AGREE" message when viewed on the navigation screen and will allow uninterrupted use of the ADDRESS input feature when the DEST button is pressed. The kit will also allow use of the dialing features of a Bluetooth phone when the appropriate steering wheel button is pressed

Installation includes:

- Pull loose lower center panel
- Pull left vent free
- Remove two screws on lower steering panel and pull loose
- Pull upper steering cover free
- Pull center left vent free
- Pull center right vent free
- Remove 10 mm bolt on either side of monitor
- Slide monitor rearward to expose connectors
- Unplug right connector and install Kit Harness
- Slide monitor back in position and reinstall panels in reverse order

Tools necessary:

- Phillips Screwdriver
- 10 mm socket with extension
- Flat blade (Common) Screwdriver
- Optional Panel removing tool or flat pry tool

At this time, Coastal Electronic Technologies, Inc. would like to recommend that you have this installation completed by a certified mechanic or someone familiar with automotive electronics. This installation, while not time consuming, does require careful attention to detail and precise following of installation instructions.

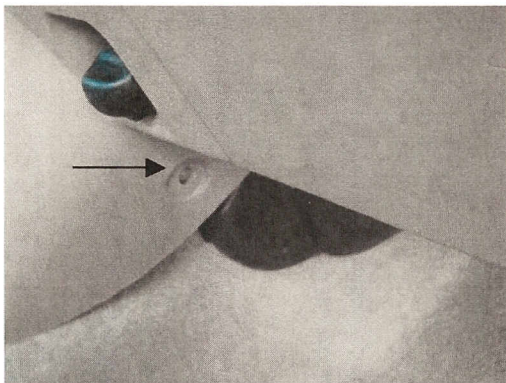
Coastal Electronic Technologies, Inc. accepts no responsibility for any outcomes due to the improper installation or use of this product. Installation and/or use of this product implies and signifies acceptance of this term of use.

Installation

Begin your installation by becoming familiar with the components, instructions and pictures. Plan appropriately for the time involved for completion. Typically, you will need approximately 1 hour although this may vary with your experience level.

Toyota utilizes plastic or metal friction locks for most of its assembly of interior body panels. These are dislodged by pulling the panels free using moderate pressure and techniques. A simple help to start the removal of the panels is to use a plastic bondo spreader or other flat tool to start the process of pulling the panels free from their locks. Once it is started, you can use your fingertips to continue carefully pulling the individual panel free. Some panels will overlap others so follow the instructions and order to make sure that the panel you are removing is the one on top.

To begin the installation of the Navigation Enhancement Kit, the lower panel in the center of the console must be slightly dislodged to allow easier removal of the air vent assemblies. On the lower right corner, a friction pin must be removed first to allow the panel to be pulled free. The pin is removed by using a flat tool to lift the edge and work it free.

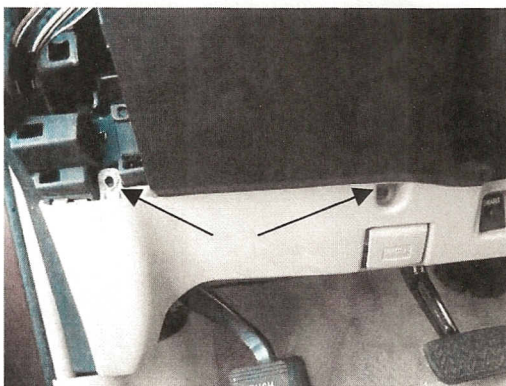


With the pin removed, pull the center panel free by pulling rearward and rocking it free from the friction locks along the top edge. It is not necessary to unplug and take the panel out. Just move it a slightly rearward to make room for the air vent removal later.

Next, remove the air vent assembly to the left of the steering wheel. Pull the bottom of the panel free first and then continue by pulling the top edge free to remove the entire panel. There are no screws holding the air vent panel in place.

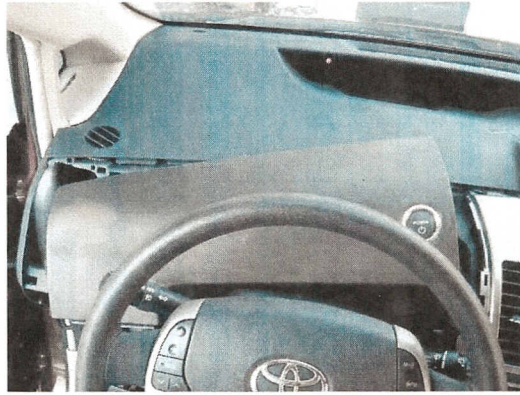


With the left air vent panel removed, remove the exposed screw in the lower panel and the other one just to right.



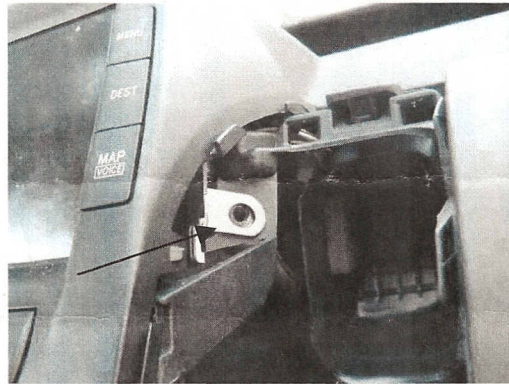
The lower panel can now be pulled free along the top edge on either side of the steering wheel. Again, there is no need to completely remove the lower panel. Just pop it free from the friction locks to allow room to pop up the top panel.

Now the panel on top can be pulled upward slightly from its friction locks as viewed in the photo below.



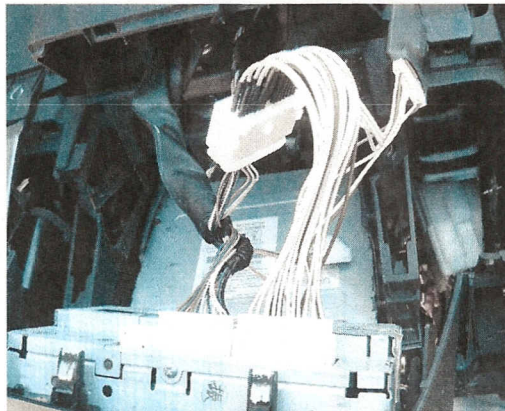
The entire purpose of dislodging the upper and lower panels is to allow the air vent to the left of the radio to be pulled slightly outward. Grasp the lower edge of the vent assembly and pull it rearward free from the friction locks and then gently pull the top edge free. Pull it free far enough to view the 10 mm bolt on the left side of the monitor screen.

The vent assembly to the right of the radio and monitor screen is now removed by again, pulling the bottom free and then pulling the top edge free to completely remove the vent assembly and expose the 10 mm bolt on the right side of the monitor.



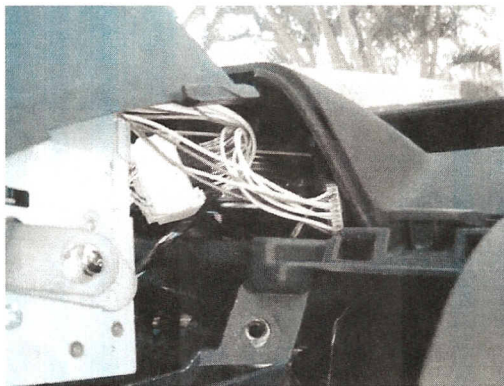
Remove the 10 mm bolts on the left and right side of the monitor screen to allow the screen to be pulled rearward for installation of the Navigation/Bluetooth kit.

With both bolts removed, grasp the monitor assembly and pull it rearward and free from the friction clips along the edge. This will expose the connectors on the top, back side of the monitor assembly.



Unplug the right connector by pressing down the tab in the center of the connector and pulling it free. Plug in the matching connector of the Navigation Kit wiring harness in to the previous location in the back of the monitor. Plug the original connector removed earlier into the other connector of the Navigation Harness.

This completes the installation of the Navigation/Bluetooth Kit. Begin reassembly by placing the Kit controller board into the area to the right behind the monitor and slide the monitor back into position.



Reinstall the 10 mm bolts and press the air vent assemblies back into position on either side of the monitor. Press the upper steering cover back down and then press the lower panel back in position. Reinstall the two screws in the lower panel and then press the left air vent back into its location. Last press the center panel back into position and insert the friction pin in the right corner.

Operation

The operation of the Navigation/Bluetooth kit is automatic. Whenever the “I AGREE” screen is viewed on the screen, the kit will allow enough time to read it and then automatically remove it from view. If the DEST button is pressed, the kit will perform a series of communication (approximately 10 seconds) which will open up the navigation system for unrestricted operation during the time the vehicle is operated. During this initialization time, various screen views will automatically appear as the process is completed. This preparation only occurs the first time the DEST button is pressed on any particular trip and will not be repeated until needed the next time the vehicle is turned on again.

The Bluetooth function allows unrestricted use of the Bluetooth phone features. When the CALL button is pressed on the steering wheel the screen view will switch to the ONE TOUCH dialing screen as usual. However, if the BACK button is pressed in the top right corner, the full dialing screen will now be available and operational for the user, allowing on-screen dialing for your Bluetooth phone. This enabling function will end immediately if a call is made or if the HANG UP steering wheel button is pressed. When activated, the enabling function will allow approximately 20 seconds of on-screen dialing from the main screen before it will time out. Pressing the CALL steering wheel button again will give an additional 20 seconds of dialing time. The function is not activated when the CALL button is used to answer a phone call. This completes the installation and connection of the Navigation/Bluetooth Enhancement Kit.

Enjoy and Thank you for your trust in Coastal Electronic Technologies, Inc.